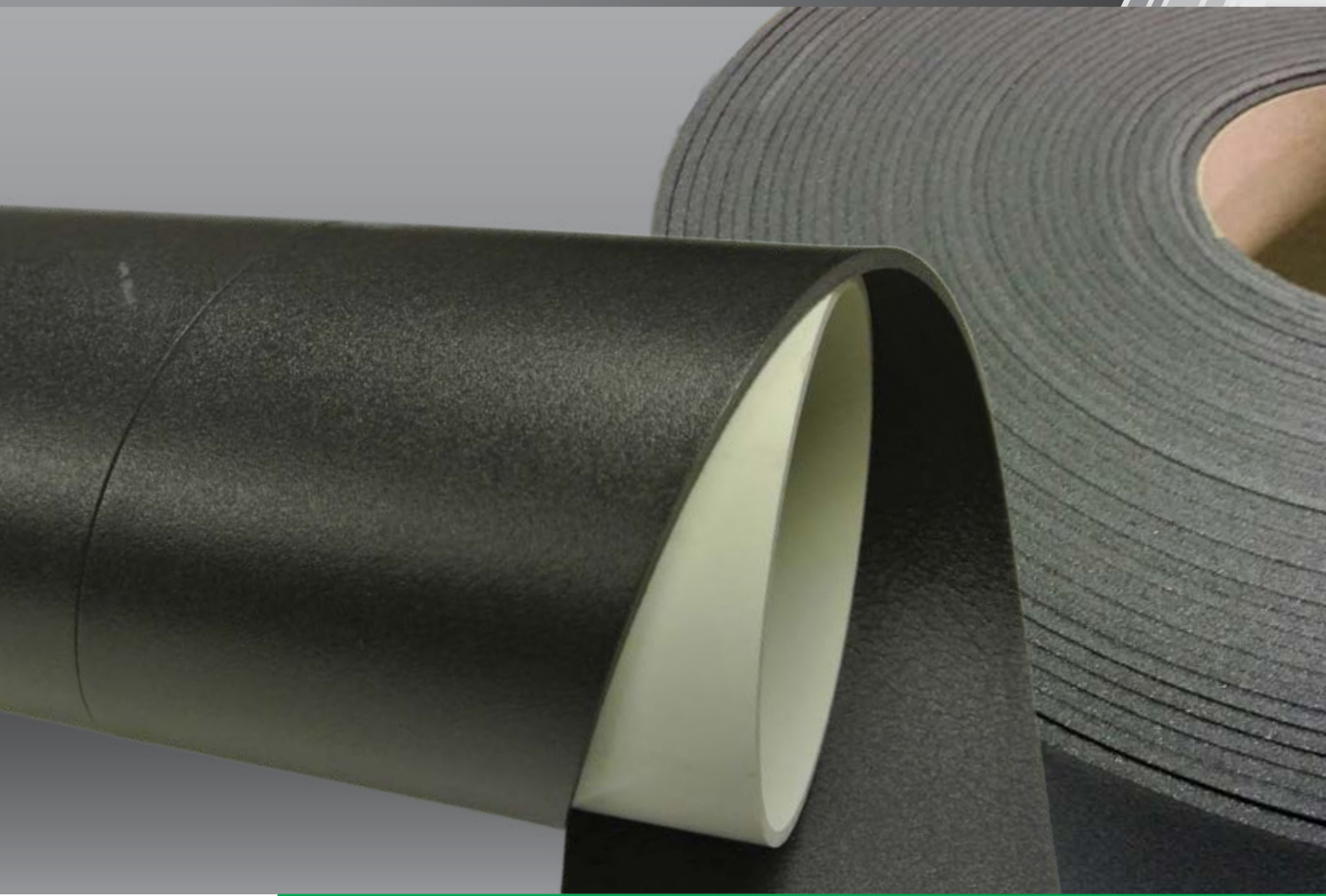


# ***SOF-FORM™ LAGGING***

*PIPE LAGGING FOAM*



SOF-FORM™ LAGGING is a closed cell, physically crosslinked polyolefin foam with an outer skin on both faces, used for pipe lagging. It is free of heavy metals, plasticisers and CFC's.

**SEKISUI**

**FOAM**  
**INTERNATIONAL**  
Global Foam Solutions

**PHYSICALLY**  
CROSSLINKED  
SEKISUI TECHNOLOGY

# SOF-FORM™ LAGGING

## PIPE LAGGING FOAM

### Uses

A flexible closed cell foam pipe lagging and insulation

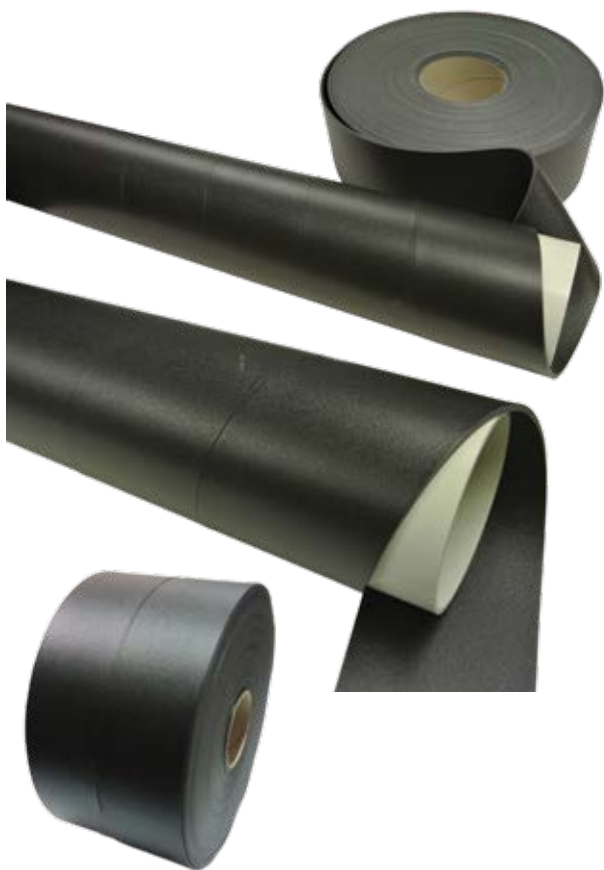
- Used for wrapping pvc piping before the concrete slab is poured
- Wrapping plumbing and sewerage pipes
- Closed cell foam - nil water absorption and moisture resistant
- Reduce the cooling and heating loss of heating and plumbing pipe installation work
- Protection against expansion and contraction movement in concrete slabs, footings and foundations.

### Stock Lines

Roll Specifications T:4mm x L:25m rolls

Pack Qty 50mm x 20 rolls and 100mm x 10 rolls

Special sizes available on request



### Technical Specs

Properties	Test Method	Unit	Typical Value
Density	Internal	kg/m <sup>3</sup>	33 (nominal)
Tensile Strength	JIS K6767		
MD		kg/cm <sup>2</sup>	4.4
CD		kg/cm <sup>2</sup>	2.6
Elongation	JIS K6767		
MD		%	250
CD		%	158
Tear Strength	JIS K6767		
MD		kg/cm	2.4
CD		kg/cm	1.5
Compression Strength	Internal		
25% Compression		kg/cm <sup>2</sup>	0.35
50% Compression		kg/cm <sup>2</sup>	1.00
Compression Set	JIS K6767		
25% Defl.n		% set	6.5
50% Defl.n		% set	23.0
Diml Change Heat	70°C, 22hr		
MD		%	-1.45
CD		%	-0.75
Water Absorption	JIS K6767	mg/cm <sup>2</sup>	0.07
Water Vapour Permeability	JIS Z0208	g/m <sup>2</sup> , 24hr	4.6

This information on Sekisui Foam Australia foams is presented to the best of our knowledge. All product data is based on average values and is for guidance only. As these products are subject to constant research and development, we reserve the right to update the contents without notice. Date of Publication: February 2015.

Recommendations as to methods of post fabrication, application and use of Sekisui Foam Australia foams are based on our experience and knowledge of the characteristics of our products and are given in good faith. As producer of the material we have no control over the application of Sekisui Foam Australia foams and no legal responsibility is accepted for such recommendations. In particular, no responsibility is accepted by us for any system in which Sekisui Foam Australia foams are utilised or for any application. Softlon and Thermobreak - Registered trademarks of Sekisui Foam Australia.

**SEKISUI** | **FOAM**  
INTERNATIONAL  
Global Foam Solutions



#### Sekisui Foam Australia

##### Head Office

1-5 Parraweena Rd, PO Box 2898,  
Taren Point NSW 2229 Australia  
Tel: +61 2 9525 9880  
Fax: +61 2 9525 8004  
Email: [info@sekisuifoam.com.au](mailto:info@sekisuifoam.com.au)  
Web: [www.sekisuifoam.com.au](http://www.sekisuifoam.com.au)

##### Queensland Branch

15/853 Nudgee Rd, PO Box 448,  
Northgate QLD 4013 Australia  
Tel: +61 7 3267 7100  
Fax: +61 7 3267 7166  
Email: [info@sekisuifoam.com.au](mailto:info@sekisuifoam.com.au)  
Web: [www.sekisuifoam.com.au](http://www.sekisuifoam.com.au)